

G Menominee Casino Resort

The Menominee Casino Resort, owned and operated by the Menominee Indian Tribe of Wisconsin, became Wisconsin's first Las Vegas style casino on June 5th, 1987.

Guests experience gaming at its best within 33,000 sq. ft. of gaming space that features more than 850 reel and video slot machines, Blackjack, 21+3, Let-It-Ride, Progressive Three Card Poker, 8 Poker Tables, Craps, Ultimate Texas Hold'em, Roulette, and a 450-seat Bingo Hall. FREE live entertainment every weekend - we keep you entertained 24 hours a day.

The culturally inspired 13,000 square foot Menominee Conference Center represents the history, culture and traditions of the Menominee people. The Five Clans Ballroom has the capability of hosting weddings and functions for up to 600 guests and five large breakout rooms can accommodate meetings up to 50 people. The Conference Center is what sets Menominee Casino Resort apart from any other resort in the Eastern North Woods.

N277 Hwy. 47/55, Keshena, WI
Phone: (715) 799-3600
www.menomineecasinoresort.com



H The Thunderbird

The Thunderbird Club is nestled among a number of beautiful rustic lakes on the southeastern corner of the Menominee Indian Reservation. The complex consists of a convenience store, gas station, rental properties, and the club hosting a bar, restaurant, and mini-casino with just under 30 gaming machines.

W106 Cth. VV, Keshena, WI | Phone: (715) 799-6543



Annual Events

Menominee Nation Contest Pow-Wow

Historic Woodland Bowl, Keshena, WI. Held the first weekend in August.

Wild Rice Harvest

After the big Pow-Wow.

Menominee Sturgeon Feast and Celebration Pow-Wow

Menominee High School, Keshena, WI. Held the third Saturday in April.

Lumberjack Breakfast

Menominee Logging Museum, Keshena, WI
Held the first weekend in October.

New Years Eve Sobriety Pow-Wow

Menominee High School, Keshena, WI. New Years Eve.

Veteran's Pow-Wow

Historic Woodland Bowl, Keshena, WI. Held the third weekend in May.

I Pine Hills Golf & Supper Club

Pine Hills Golf Course, where golf isn't just a game - it's an experience! Nestled in the North Woods, you'll find splendor in our well-manicured golf course and you will enjoy the pleasures of world-class dining.

Located just 30 minutes Northwest of Shawano off Hwy. 47, Pine Hills Golf Course is carved out of the mystic beautiful north woods landscape.

After a round of golf, dine in the charm of Pine Hills Supper Club, warmly decorated with a view opening onto the golf course. It's a fine dining experience worth a return visit.

N9499 Pine Hills Drive,
Gresham, WI
Pro Shop: (715) 787-3778
Bar: (715) 787-3981



White Water Rafting

J Big Smokey Falls Rafting

White Water Rafting At Its Best

Enjoy white water rafting among the sunshine and scenery on the unspoiled territory of the Wolf River. Big Smokey Falls Rafting combines relaxing calm waters with the excitement of some of the best white water in the state. Located just 10 miles North of Keshena.

N4597, P.O. Box 247, Keshena, WI | Phone: (715) 799-3359
Season runs May 1st through September 15th. Open 7 Days a Week.
Open Sunday through Friday at 8 am; Saturday and Holidays at 7 am.

K Shotgun Eddie

The ultimate in white water rafting.

Shotgun Eddie offers multiple rafting trips that range from a few hours to full day trips. Trips provide you the opportunity to relax and enjoy the splendor of the Wolf River, while darting thru rocks and challenging waters. Shotgun Eddie also offers a campground located right on the river. Outhouses, pump water and firewood are available. If you need supplies, the camp store and grill sell many of the items you may need.

N2765 Hwy. 55, White Lake, WI | Phone: (715) 882-4461
Located 25 miles North of Shawano on Highway 55.
Rafting season opens May 1st and closes early September.
Visit us online at www.shotguneddy.com for more information.

L College of Menominee Nation

Welcoming visitors on Highway 47/55 at the southern-most border of the Menominee Reservation is the College of Menominee Nation, an accredited Land Grant institution serving American Indian and other students. The 45-acre main campus features seven academic and support buildings, with the two newest – the CMN Library and the Community Computing Center – opening respectively in 2008 and 2012. The College enrolls approximately 700 students each semester, with enrollment drawn from the Menominee, Oneida, Stockbridge Munsiee, Ho Chunk, Chippewa and numerous other tribes, and the general community. Since its founding in 1993, the College has graduated nearly 700 students with Bachelor of Science and Associate degrees, and technical/trades diplomas.

Visitors are welcome at the Library at any time and can arrange a tour of other campus facilities by calling the CMN Development Office, (715) 799-6226, ext. 3156.



~ ~ Our Mission ~ ~

The Menominee Chamber of Commerce, Inc. is dedicated to promoting our members' businesses, tourism, and assisting with their economic growth. We are an advocate for businesses and are committed to helping members compete regionally by providing them with outstanding programs, benefits and services.

Contact Us

Menominee Chamber of Commerce, Inc.

P.O. Box 543 Keshena, WI 54135

Phone: (715) 799-6000 www.menomineechamberofcommerce.org

Email: menomineechamber@frontiernet.net



Menominee Indian Reservation of Wisconsin

The Menominee Indian Reservation is located in the state of Wisconsin approximately 40 miles Northwest of Green Bay.

Two state highways, 47 and 55, serve the Reservation.

The Menominee Reservation contains approximately 220,000 acres of heavily forested lands, representing the largest single tract of virgin timberland in Wisconsin.

The Reservation is penetrated by the Wolf River, recognized as one of Americas foremost wild and scenic rivers.

The Menominee were Wisconsin's original inhabitants.

The Menominee Nation invites you to learn about and to appreciate our forest, our traditional values, culture and our community members as much as we appreciate them.

Menominee Indian Reservation

A Menominee Cultural Museum

The new Menominee Cultural Museum was completed in spring 2010. The new state of the art environmentally controlled facility will be the focal point of Menominee culture, history, and language. The 6,000 square foot facility will display Menominee artifacts the tribe will repatriate from museums through the Native American Graves Protection and Repatriation Act. The new museum is located next to the Menominee Logging Museum on the banks of the Wolf River just north of Keshena. The museum is open four days a week during the summer months (Monday through Thursday) June through September and five days a week October through May. Phone: (715) 799-5258



B Menominee Logging Museum

The logging museum holds the largest collection of logging artifacts in the world. Each building holds thousands of artifacts. Visitors will see a bunkhouse, cook shanty, camp office, butcher's shop, saw filer's shack, blacksmith shop, horse barn, scoop cedar roof shed, Bateaux vessel used for log drives and an authentic "1911" steam driven locomotive engine. You can experience this guided tour one mile north of Keshena CTH VV just off Highway 47. The museum opens in May through October for tours, however June through September the museum will be open Monday through Thursday and weekends by appointment. Rates are \$10 for adults, \$7 age 62 & over, \$5 for children 10-15 and group rates are available. Phone: (715) 799-3757 | www.menominee.nsn.gov



C Menominee Tribal Enterprises

With the formation of the current reservation in 1854, we added the management harvesting and processing of timber to the Menominee's traditional hunting and gathering economic base.

Menominee Tribal Enterprises (MTE) is the business arm of the Tribe. Its primary purpose is to log, manage, and reforest the tribal forestland, and to manage, market, sell, and distribute timber, forest products and related products. Since they began in the 1880's, forestry and sawmill operations have been the backbone of the Tribe's economy.

In addition to the forest development and management responsibilities, Menominee Tribal Enterprises operates wood products manufacturing facilities in Neopit, Wisconsin, which consists of an integrated random length hardwood/softwood sawmill, complete with drying, planing, molding, and shipping facilities.

Hwy. 47 North, P.O. Box 10, Neopit, WI
Phone: (715) 756-2311 | www.mtewood.com

Visitors to Menominee County are asked to respect the natural and cultural resources. Note that strict tribal environmental protection standards are vigorously enforced so that we can maintain our high quality forest, streams, rivers, lakes soils and air.

E The Menominee Clinic

The Menominee Clinic serves the total health care needs of the Menominee and is a milestone in the exercise of Indian Self Determination.

The Clinic has been accredited since 1989, and we are currently accredited by the Accreditation Association for Ambulatory Health Care, Inc. (AAAHC). The Clinic is committed to providing high quality care to our community.

The Menominee Tribal Clinic provides the following services: Primary Care, Pharmacy, Dental, Optometry, Audiology, EMS, Nutrition, Community Health, Nursing, Health Education, and Public Health Outreach.

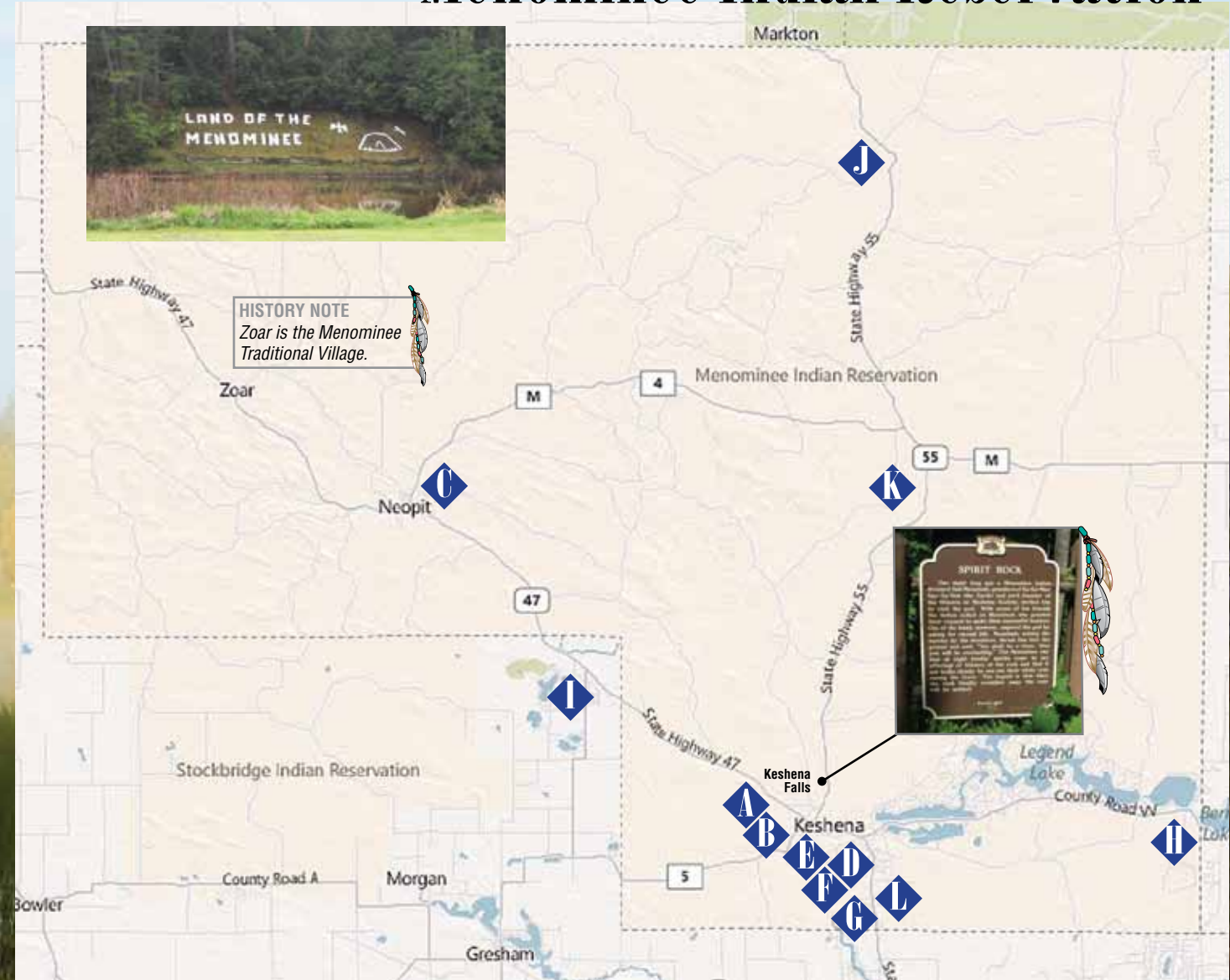
W3275 Wolf River Road, Keshena, WI 54135
Phone: (715) 799-5443 | www.mtclinic.net



F Menominee Tribal Government

The Menominee Indian Tribe is a federally recognized sovereign nation, governed by a Constitution and laws that are adopted by its Tribal Legislature. The tribal members elect the nine-member Menominee Tribal Legislature. Each member serves a three-year term. The Tribal Legislature selects one of its members to serve as Tribal Chairman for a one-year term.

P.O. Box 910, Keshena, WI 54135
Phone: (715) 799-5114 | www.menominee.nsn.us



Menominee Indian Tribe of Wisconsin
Menominee Business Center
Mailing: P.O. Box 910
Physical: N559 Library Rd
Keshena WI 54135
Phone: (715) 799-5720
Fax: (715) 799-5721
www.menominee.nsn.gov

